

WASHINGTON

SENIOR PLANNER – LONG RANGE PLANNING

\$63,752 - \$83,158

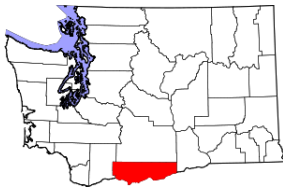
Plus Excellent Benefits
(Salary Under Review)

Apply by
September 26, 2021
(First Review, Open Until Filled)

PROTHMAN



Klickitat County, Washington



Located in south central Washington, Klickitat County lies at the junction where the Columbia River Gorge cuts through the eastern slopes of the Cascade Mountains with expansive farms and wheat fields, vineyards, timberland, and magnificent Mt. Adams as a backdrop. The county seat, historical Courthouse and the largest city is located in Goldendale.

Encompassing 1,908 square miles, the County’s nearly 22,000 residents reside in the cities of Goldendale, White Salmon and Bingen, and unincorporated communities of Bickleton, Centerville, Dallesport, Firwood, Glenwood, Klickitat, Lyle, Maryhill, Roosevelt, Trout Lake, and Wishram. Klickitat County offers a wide variety of geological and natural features and is well known for its miles of whitewater streams, numerous lakes, the Columbia River, and the Gifford-Pinchot National Forest. The County is also home to the Klickitat Wildlife Management Area and Conboy Lake National Wildlife Refuge.

With a mild year-round climate, the area is the perfect place to take advantage of an abundance of outdoor recreational activities from fishing and hunting to whitewater rafting, windsurfing, hiking, biking, horseback riding, cross country skiing, snowmobiling, and berry and mushroom picking. Scenic tours provide opportunities to thousands of travelers and visitors to the Columbia River Gorge and the Cascade Mountains, while an expanding winery and grape growing industry offers many award-winning wines at several tasting rooms that are open to the public. The County also offers a wide variety of accommodations, attractions, and historical landmarks including the Maryhill Museum, Stonehenge, Goldendale Observatory, numerous restaurants, and beautiful mountain views of Mt. Hood and Mt. Adams.

Visitors and residents also will find that Klickitat County's canyons and vistas, evergreen forests, scenic waterfalls, wildflowers, berry fields, ranchlands, sage-covered hillsides, river rapids, rodeos, festivals, and for those who seek it, seclusion, are among the best in the U.S. Being a rural close-knit community, Klickitat County is a glorious place to call home, raise a family, and be employed.



THE ORGANIZATION

Klickitat County is governed by a three-member Board of Commissioners serving overlapping four-year terms, with each Commissioner representing one of three districts. The Commissioners serve as the Executive Branch and perform legislative and quasi-judicial functions of the County. The Board of Commissioners is responsible for approving ordinances, adopting the County budget, setting standards for the use of County property, and appointing non-elected officials, boards, commissions, and committees. In 2021 the County will move into a new County Services Building to combine departments currently housed in 4 annexes, making it more accessible to the community. The County has two other services buildings; the Pioneer Center in White Salmon, and the Courthouse in the county seat, Goldendale. Klickitat County employs approximately 250 FTE’s and operates on a 2021 budget of \$77,694,529 including a General Fund Budget of \$18,347,018. County Departments and Elected Officials Offices include: Adult Probation Services, Assessor, Auditor, Building Inspection, Code Compliance, Civil Service, Commissioners, County Clerk, East and West District Courts, Economic Development, Emergency Management, IT & Budget Services, Juvenile Department, Natural Resources, HR & Administrative Services, Planning, Prosecuting Attorney, Public Health, Public Works, Senior Services, Sheriff, Solid Waste, Treasurer, Veteran Services, Weed Control, WSU Extension Services, and Superior Court.

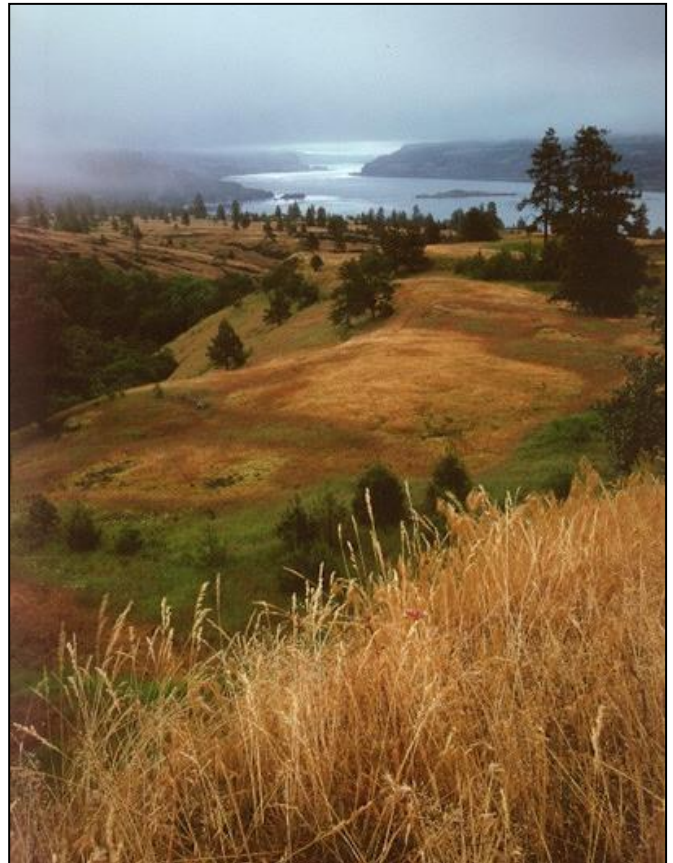


THE DEPARTMENT & POSITION

The Planning Department is responsible for both long range and current planning functions. The Planning Department shepherds proposals through the public process, and implements policies and regulations adopted by the Board of County Commissioners. The Department has 5 FTEs and operates on a 2021 budget of just over \$500,000.

Under the direction of the Planning Director, the Senior Planner – Long Range Planning serves as a key member of the Department by providing advanced professional level planning duties to support the Director on a variety of projects and work to improve the effectiveness and efficiency of the Planning Department. This is the most advanced non-supervisory planning position. Main responsibilities of the position include assisting the Planning Director in identifying long-range planning issues and policies and assisting in developing subsequent work program priorities. This position will undertake long-range planning projects as assigned, coordinate, schedule, and review work assignments for long-range planning projects when acting as technical and policy advisor to assigned staff or consultants and maintain a working understanding of new land use legislation, administrative rules and case law. The Senior Planner – Long Range Planning will also attend and participate in professional group meetings, maintain awareness of new trends and developments in the field of planning, and incorporate new developments as appropriate into the department’s programs and priorities.

For a full job description, please view the attachment found [here](#).



IDEAL CANDIDATE PROFILE

Education and Experience:

Any combination of education, skills and experience that demonstrate an ability to excel in one of the three positions may be considered. Typical demonstration of the minimum education and experience for might include a bachelor’s degree in environmental sciences, natural resources management, planning, geography, geology, or a field directly related to the area(s) of assignment, and four (4) years of increasingly responsible professional experience (including related internships).

The ideal candidate will have demonstrated knowledge and experience in one or more areas within the Planning field related to the area of assignment, including Environmental Planning (SEPA, Critical Areas/Shorelines and Natural Resources), Current Planning (Subdivision and Zoning), and Comprehensive Long-Range Planning.

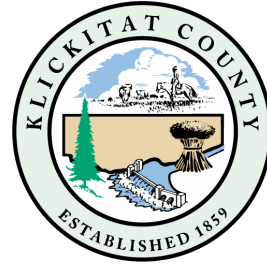
A Masters’ Degree may substitute for one year of experience OR any equivalent combination of training and experience that would provide the required knowledge, skills and abilities to successfully perform the essential duties of the job.



COMPENSATION & BENEFITS

- **\$63,752 - \$83,158 DOQ**
- Medical, Vision and Dental with 100% employer paid contributions for employee only and 84% contributions for dependent coverage
- Health Savings Account
- Life Insurance/AD&D
- Long-term Disability Insurance
- Washington State PERS Retirement System
- Sick and Vacation Leave
- 11 Paid Holidays
- Optional Flexible Spending Account

To learn more, please visit:
www.klickitatcounty.org



Klickitat County is an Equal Opportunity Employer. All qualified candidates are strongly encouraged to apply by **September 26, 2021**. (First review, open until filled), Applications and materials will only be accepted electronically. To **apply online**, go to www.prothman.com and click on "Open Recruitments" followed by "**Senior Planner – Long Range Planning – Klickitat County, WA**" and follow the directions provided, visit www.governmentjobs.com/careers/klickitatcounty, or [click here](#).



www.prothman.com

371 NE Gilman Blvd., Ste 310
Issaquah, WA 98027
206.368.0050